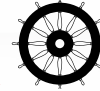


Liferaft OCEANO

Open Reversible Type



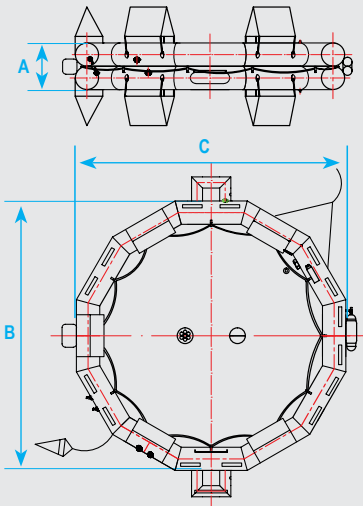
MED APPROVED



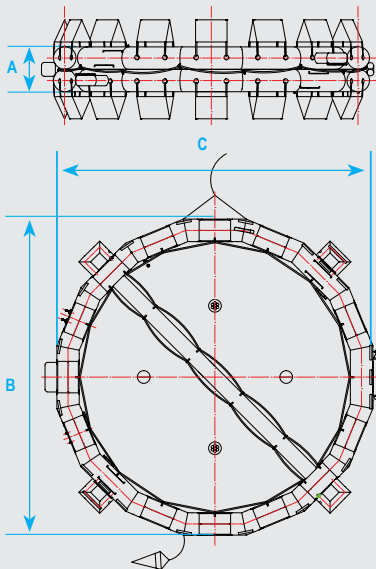
- Ideal for passenger ships operating in coastal or inland waters
- Equipment pack: HSC pack
- Available capacities: from 25 to 100 persons
- GRP canister
- Durable rubber fabric
- Double chambered tubes
- Stowage height up to 10m (painter line up to 20m)
- Fully operational at temperatures from -18°C up to +65°C
- Global Service Stations' network
- Supplied with deck cradle in wooden box

With fully transferable 12-year warranty on fabric and seams (starting from the day of manufacture). T's and C's apply.

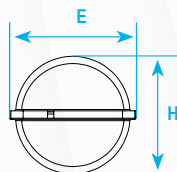
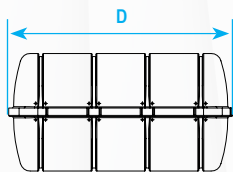
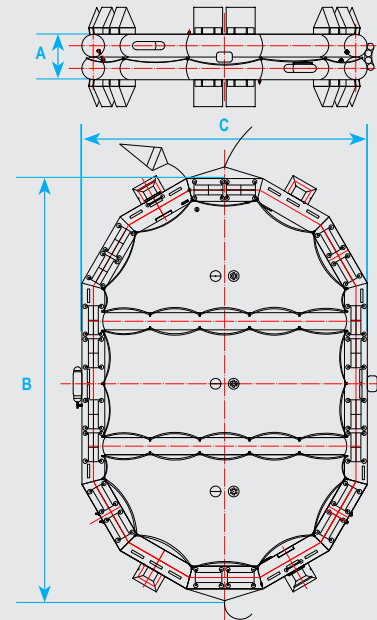
25 & 30 Persons



50 & 65 Persons



100 Persons



- Please note that all liferaft dimensions and weight may slightly vary (± 3 cm for dimensions, $\pm 5\%$ for weight).
- Actual product marking may slightly differ from the picture.

Code	Persons	Weight (kg)*	Pack	Dimensions (mm)					
				A	B	C	D	E	H
79898	25	92	HSC	712	4114	4114	1090	615	530
79899	30	109		746	4474	4474	1230	630	550
79900	50	168		854	5680	5680	1490	757	678
79901	65	215		914	6434	6434	1700	765	680
75459	100	293		1006	9066	6306	1820	830	750

*Total weight of each liferaft including its canister, without the deck cradle & the wooden box.

Global Service & Supply Network



- ✓ Global **service network** through owned locations & third-party service providers
- ✓ Global **supply** of **LSA**, **FFE** and **spare parts**
- ✓ Certified quality standards by **major classification societies**
- ✓ **Robust warranty** supported directly by the manufacturer
- ✓ Streamlined **after-sales support** via our ticketing system

Safety is not just a product, it is an ongoing process!