



**LALIZAS** 



HOUSTON • HOUMA

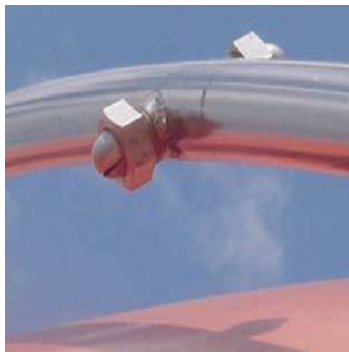
# LIFEBOATS & RESCUE BOATS

*Providing best in class Marine Safety products  
and services to the Oil & Gas and Commercial  
Marine industries worldwide*



# LALIZAS / ALEXANDER

TOTALLY ENCLOSED LIFEBOAT / RESCUE BOATS										
TYPE	SEATING		L (m)	B (m)	H (m)	HOOK DIST. (m)	APPROX. WEIGHT (KG)			
	SOLAS	GULF OF MEXICO					CARGO VERSION		TANKER VERSION	
	82.5 KG	95 KG /210 LB					EMPTY	FULL LOAD	EMPTY	FULL LOAD
BH-5S	25	19	5.28	2.20	2.70	4.80	2160	4035	2420	4295
BH-5SA	25	21	5.71	2.20	2.70	5.23	2300	4363	2606	4669
BH-6A	30	23	6.50	2.30	2.70	6.00	2896	5371	3210	5685
BH-7A	40	31	7.30	2.65	2.85	6.44	3300	6600	3660	6960
BH-7B	34	26	7.10	2.30	2.80	6.40	2694	5850	3346	6151
BH-8	50	39	8.00	3.00	2.90	6.70	3772	7897	4127	8252
BH-8K	75	60	8.42	3.22	3.40	7.80	TBD	TBD	5685	11873
BH-9	65	50	8.40	2.80	3.10	7.55	4610	10473	4850	10713
BH-9A	73	56	9.26	2.80	3.10	8.42	5426	11449	5982	11950
BH-9XL	81	63	10.12	2.80	3.10	9.28	6010	12693	6493	13175
BH-10B	100	78	10.42	3.60	3.10	8.70	TBD	TBD	5328	11828
BH-10AD	92	75	10.40	3.52	3.70	9.28	7345	14935	7900	15490
BH-10XLAD	107	86	11.72	3.52	3.70	10.60	7024	16479	7588	17043
BH-10XXLAD	120	100	12.80	3.52	3.70	11.70	TBD	TBD	9110	20200
BH-E1280	150	125	12.70	3.96	4.0	11.90	TBD	TBD	9365	21740
FREEFALL LIFEBOATS										
BH-F660	26	20	6.67	2.85	3.10	1 HOOK	4150	6295	4255	6400
BH-F750	32	24	7.50	2.85	3.10	1 HOOK	4550	7190	4710	7350
BH-F831	36	28	8.10	2.80	3.05	1 HOOK	4900	7600	5250	7950
BH-F1050	50	TBD	10.50	2.85	3.20	1 HOOK	TBD	TBD	6080	10205



# LIFEBOATS & RESCUE BOATS

- Designed and built in accordance to SOLAS/LSA Code 2010 including IMO Resolutions MSC.320(89) AND MSC.321(89) and all amendments.
- Prototype tests and production tests are carried out according to IMO A.689(17) and its amendments.
- Tanker version and Cargo version are available. The BH-9 and smaller lifeboats can be dual certified as combined lifeboat/rescue boats.
- Tanker version is equipped with emergency air system and water spray system.
- Emergency air system supplies breathing air for ten minutes.
- Water spray system-self priming, sea water pump driven by a diesel engine.
- GRP structure, all materials are approved by administration and classification societies.
- The hull, inner hull, and canopy are moulded individually.
- Certified polyurethane foam is used as buoyancy material.
- The aft deck makes it convenient for rescue and safe embarkation.
- Three options for boarding are available: aft embarkation, side embarkation, or both.
- Approved by ZC, CCS, ABS, LR, NK, DNV, MCA, USCG, BV, RINA, CE/MEDMod D.

**We are an ISO 9000 compliant company,**

*supplying a complete line of Marine Safety and Fire Protection Products to energy companies, engineering firms, drilling contractors, shipyards, OEM's and supply companies worldwide.*



## OPTIONS

<b>Engine</b>	Bukh, STEYR
<b>Starting System</b>	Electric-electric, electric-hand spring, electric-hydraulic
<b>Fittings/Small</b>	316, 304, seawater resistant aluminum or hot dip
<b>Parts</b>	Galvanized steel
<b>Hand Rails</b>	316, 304

**FULLY COMPLIANT BH-FS SERIES  
STAINLESS STEEL RELEASE GEARS  
INCLUDED**



**LOCATIONS**

### HEADQUARTERS

2000 Wayside Drive  
Houston, TX 77011, United States  
Tel.: (800) 923-1672, (713) 923-1671  
E-mail: arms-sales@alexanderryan.com

### LOGISTICS CENTER HOUMA

205 East Woodlawn Ranch Road  
Houma, LA 70363, United States  
Tel.: (985) 333-5987

[www.alexanderryan.com](http://www.alexanderryan.com)

# RESCUE BOAT SYSTEMS

TYPE	SEATING		L (m)	B (m)	H (m)	HOOK DIST. (m)	APPROX. WEIGHT (KG)	
	SOLAS	GULF OF MEXICO					UNLOAD	FULL LOAD
	82.5 KG	95 KG /210 LB						
BH-R4	6	TBD	4.19	1.70	0.84	SINGLE POINT PICKUP	650	1145
BH-R4A	6	TBD	4.56	1.57	0.75	SINGLE POINT PICKUP	510	1005
BH-R4S	6	TBD	4.20	1.75	0.95	SINGLE POINT PICKUP	750	1245
BH-R4SA	6	TBD	4.70	1.75	1.033	SINGLE POINT PICKUP	905	1400
BH-R5	8	6	4.85	TBD	TBD	SINGLE POINT PICKUP	830	1430
BH-R5DWJ	6	6	5.40	1.96	0.925	SINGLE POINT PICKUP	1400	1895
BH-R5S	6	6	4.60	1.70	0.81	SINGLE POINT PICKUP	825	1275
BH-HR6	6	6	6.00	2.46	1.09	SINGLE POINT PICKUP	1425	2095
BH-HR650	9	TBD	6.50	2.45	1.08	SINGLE POINT PICKUP	1700	2443
BH-HR7	12	9	7.00	2.60	1.42	SINGLE POINT PICKUP	2125	3440
BH-DOLPHIN	30	24	8.00	2.76	1.25	SINGLE POINT PICKUP	3250	5478

Note: Information subject to change



## LALIZAS / ALEXANDER

### Headquarters

Houston  
2000 Wayside Drive  
Houston, TX 77011  
United States  
Tel.: (713) 923-1671

### Logistics Center

Houma  
205 East Woodlawn Ranch Road  
Houma, LA 70363  
United States  
Tel.: (985) 333-5987



**LALIZAS**

E-mail: [arms-sales@alexanderryan.com](mailto:arms-sales@alexanderryan.com)

[www.alexanderryan.com](http://www.alexanderryan.com) | [www.lalizas.com](http://www.lalizas.com)

